

# NHS CENTER FOR SUSTAINABLE COMMUNITIES

1051 W. Rosecrans Ave., Compton, CA 90222 ♦ (424) 296-3521

## 2018 SUMMER & FALL



### AUGUST

DATE	TIME	EVENT
Aug 4	10am-2pm	Farmer's Market & Information Fair
Aug 11	9am-2pm	Public Safety for Kids
Aug 11	9am-2pm	Mental Health Awareness Workshop*
Aug 18	9am-6pm	FasTrak Homebuyer Education* English & Spanish
Aug 21	10am-2pm	Quickbooks*
Aug 22	10am-1pm	Start to Earn Bigger*
Aug 28	10am-2pm	Guided Business Plan*
Aug 30	10:30am -12:30pm	Access to Capital

#### Farmer's Market & Information Fair May 19, 2018



Farmer's Market attendees talk to a local farmer & produce vendor.



Youth volunteers oversee the kid's activities.

### SEPTEMBER

DATE	TIME	EVENT
Sept 6	8:30am-12:30pm	Optimizing the Transportation Sector: Infrastructure & Electrification
Sept 7	5:30pm-8:30pm	Movie Night
Sept 8	10am-12pm	Foreclosure Prevention Workshop
Sept 13	8am-10am	General Contractors & Realtors Breakfast
Sept 20	9am-11am	Faith Leader's Roundtable
Sept 21	10am-2pm	Quickbooks*
Sept 22	10am-1pm	Intro to Earn Bigger*
Sept 22	9am-6pm	FasTrak Homebuyer Education* English
Sept 22	10am-2pm	Farmer's Market & Information Fair
Sept 22	10am-12pm	Home Matters Workshop
Sept 25	10am-2pm	Guided Business Plan*
Sept 27	10:30am-12:30pm	Access to Capital
Sept 27	4pm-6:00pm	B2B Empowerment Reception
Sept 29	8am-12pm	Neighborhood Pride Day (W. 138th St. & Tajauta)



(left) Chef Tim of Dedication Catering; (right) Team members from WIC provided nutritional health resources for Women, Infants & Children.



\* = fee required

All classes in **black**, register online at [www.nhslacounty.org](http://www.nhslacounty.org)

All classes in **burgundy**, register online at [www.pcrsbdc.org](http://www.pcrsbdc.org)

All other classes, call the Center to RSVP 424.296.3521

NHS and its partners had a full year of providing services to families with the support of many corporate partners. The NHS Center for Sustainable Communities provided infinite opportunities to care for our neighbors and to help revitalize neighborhoods throughout Compton and surrounding communities. Our services touched more than 5,000 households during our first year. We keep learning. We hope you will join us as we celebrate building stronger families and communities for another year!

### OCTOBER

DATE	TIME	EVENT
Oct 5	5:30pm-8:30pm	Movie Night
Oct 11	5:30pm-8:30pm	An Evening with Fashion Designers
Oct 13	10am-2pm	Farmer's Market & Information Fair
Oct 16	10am-2pm	Quickbooks*
Oct 23	10am-1pm	Start to Earn Bigger*
Oct 25	10:30am -12:30pm	Access to Capital
Oct 27	9am-6pm	FasTrak Homebuyer Education* English & Spanish
Oct 30	10am-2pm	Guided Business Plan*

#### Community Sustainability Summit May 23, 2018



(L-R) Constance Anderson, PCR; Sal Mendoza, City National Bank & NHS Board Chair; Ron Turner & Cynthia Mayweather, KJLH.



(middle) Lori Gay, NHS President & CEO with Chi Elder & Timothy Hardaway from Citi Bank, early supporters of the NHS Center for Sustainable Communities who granted \$500,000 towards its development.



A special acknowledgement was given to the family of the late Darnell Watson. Mr. Watson encouraged NHS to form the NHS Neighborhood Redevelopment Corporation 22 years ago, a move which changed the course of NHS' business history.



[www.nhslacounty.org](http://www.nhslacounty.org)



[www.pcrsbdc.org](http://www.pcrsbdc.org)



[www.metrocdc.org](http://www.metrocdc.org)

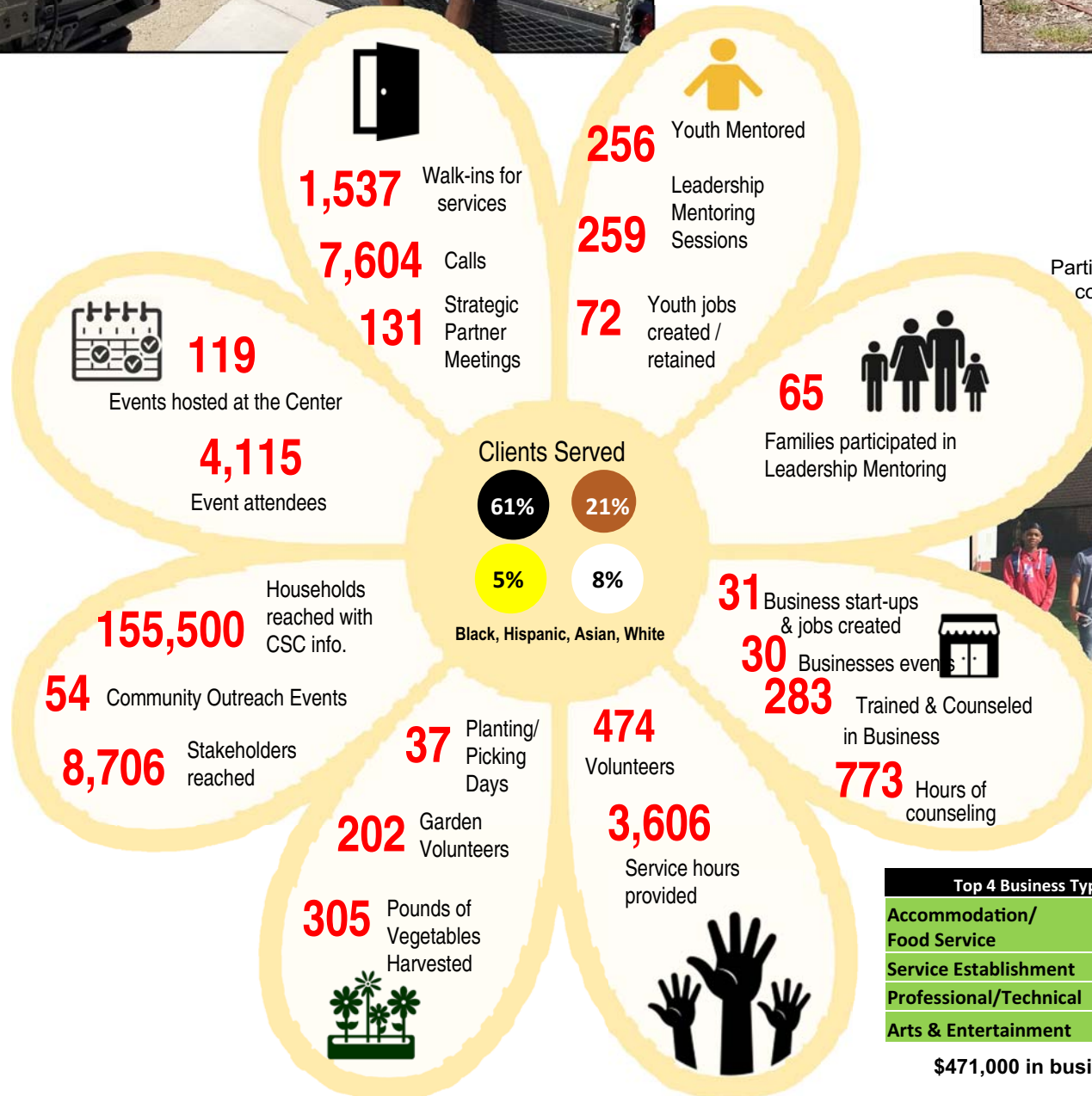


# NHS CENTER FOR SUSTAINABLE COMMUNITIES

by the numbers... Year in Review: May 2017-June 2018



Metro CDC participants and staff were interviewed during a video shoot to highlight the First Year in Review of the Center. (left) Rodney Willis; (right) Dr. Sherridan Ross, Health & Wellness Director.

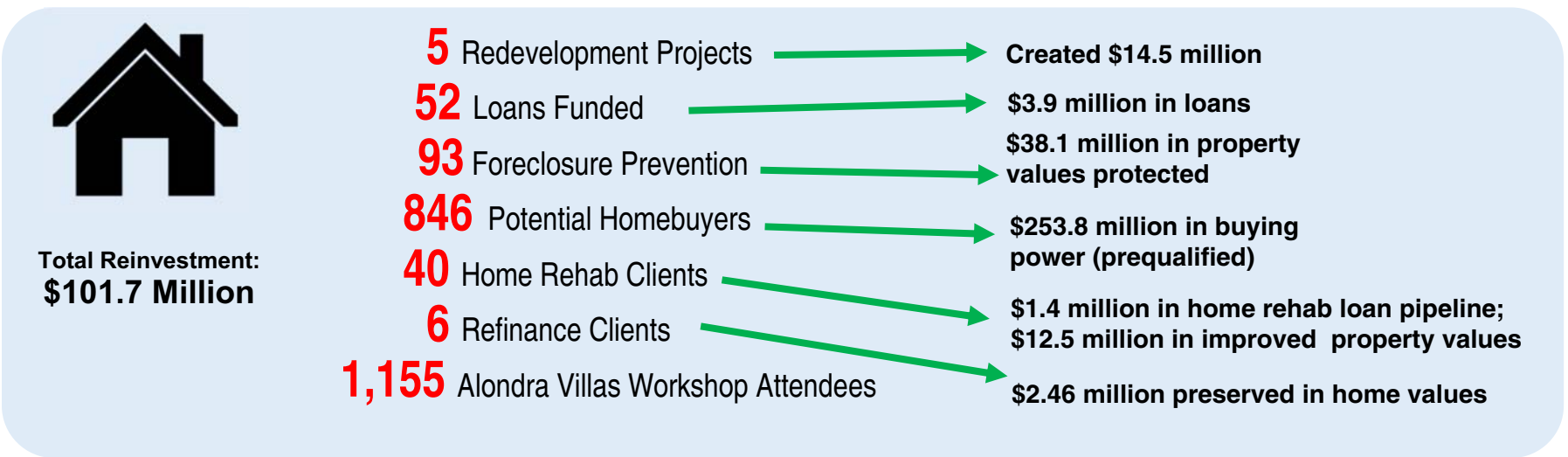


Participants in the **Compton Leader Internship Program (CLIP)**, conducted by Metro CDC. CLIP is a yearlong intern program for high school men with an emphasis on a two-week Summer Intensive. The men learn leadership and life skills with employment training and part-time jobs.



Top 4 Business Types Counseled	
Accommodation/ Food Service	19%
Service Establishment	18%
Professional/Technical	13%
Arts & Entertainment	10%

\$471,000 in business lending



NHS participated with over 30 local groups in a Community Festival at **Gonzales Park** in the Spring. The Line Dancing Team from Compton's Dollarhide Community Center stopped by the booth to get information about the NHS Center for Sustainable Communities (CSC).



Arnetta Mack, NHS Community Engagement Coordinator & Adrienne Sears, CSC Site Director, greet a family at the **KJLH Women's Health Expo** in Long Beach.